

Genaxxon BioScience DNA ladder

Lambda-DNA - BstE II DNA marker

fon:
 +49 (0)731 - 3608 123
 fax:
 +49 (0)731 - 3608 962
 eMail:
info@genaxxon.com
 internet:
www.genaxxon.com

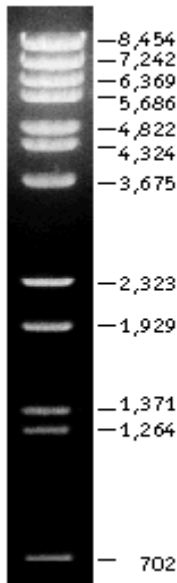
Product	Cat#	Package size
Lambda-DNA BstE II marker	M3076.0050	1 x 50µg
Lambda-DNA BstE II marker	M3076.0250	1 x 250µg

DESCRIPTION

Phage Lambda (cl857 *Sam 7*) DNA/BstE II are prepared by digesting Lambda DNA with BstE II, followed by inactivation of the enzyme. The DNA fragments are then ethanol-precipitated and re-suspended in the storage buffer.

FRAGMENT SIZES

The Genaxxon BioScience Lambda-DNA BstE II marker contains 14 fragments of the following size: 8454, 7242, 6369, 5686, 4822, 4324, 3675, 2323, 1929, 1371, 1264, 702, 224, 117bp.



STABILITY

Very stable in the delivered form.
 The DNA is delivered lyophilised with separate buffer.

ATTENTION!

The cohesive ends of fragments 1 and 4 may cause formation of extra band 14140bp. The fragments may be separated by heating to 65°C for 3 minutes before loading the sample on the gel.

CONCENTRATION AND VOLUME

0.2 - 0.5µg/µL

USAGE

We recommend to load 0.5 - 1.0µg (1µL - 2µL) per lane.

STORAGE TEMPERATURE

Store at -20°C.

RELATED PRODUCTS

Genaxxon offers also different DNA-Polymerases, Agaroses and dNTPs. Please visit our web-page for details: www.genaxxon.com